

LUX TRACER™

ENVIRONMENTALLY FRIENDLY CHEMICAL TRACERS FOR RESERVOIR MONITORING

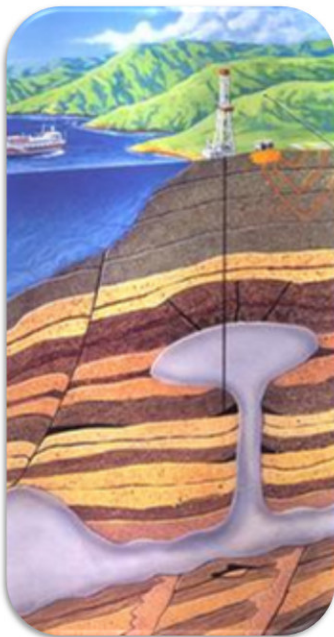


Image Courtesy United States Geological Survey;
Image source: Earth Science World ImageBank
<http://www.earthscienceworld.org/images>

Tracers are commonly deployed for the purpose of EOR, however the choice of available tracers is limited and this is compounded by the fact that many of them are either radioactive or have a poor environmental profile. Additionally, analysis of fluids containing chemical tracers requires shipping of samples to a specialist laboratory, meaning it can be weeks before results are received.

LUX Tracer™ is a technology inspired by the life sciences that offers the combination of **environmentally friendly** tracers with **easy on-site analysis** and provides **results within minutes** rather than weeks.

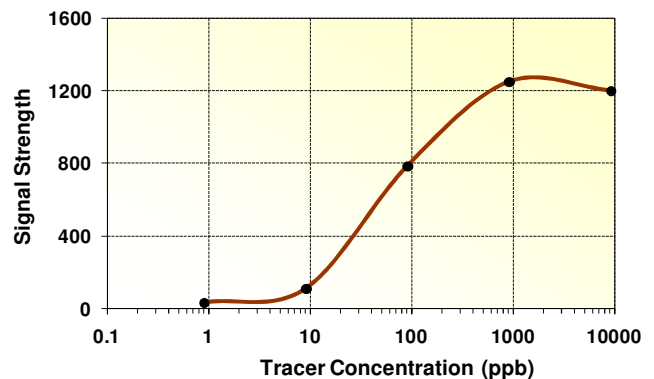
Principle of LUX Tracer™

LUX Tracer™ is a patented technology (pending) that exploits small latently detectable molecules as tracers. These molecules are only detectable upon specific binding to a complementary detection reagent. This provides for a very sensitive and simple spectroscopic detection assay that also allows for interfering background readings to be subtracted from the analysis.

Features of LUX Tracer™

- Non-radioactive
- Environmentally friendly chemical tracers
- Sensitive
- Easily detectable – allows onsite detection
- Inert to surroundings

Example of a LUXTracer™ Detection Profile



Use LUX Tracer™ for:

- Significantly increasing understanding of reservoir and production operations
- Improving waterfloods, well stimulation, and enhanced oil recovery projects
- Determination of compartmentalisation, shut-off efficiency, bypass identification, permeability and identification of thief zones, etc.